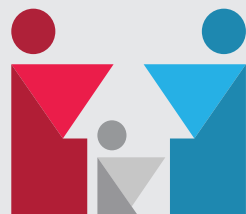


Community Centers are a new organization in Greece that aims to coordinate the social inclusion policies and to enhance the effectiveness of the social protection system.

They have been set up under Article 4 of Law 4368/2016 (Government Gazette 21/A) "Government Acceleration Measures and Other Provisions" and their funding comes from the European Social Fund under the NSRF 2014-2020.



Community Center

Municipality of Hersonissos

Days and hours of operation
for the public:

Monday to Thursday
from 10:00 a.m to 14:00 p.m.

Tel.Number

2897 340036

2897 340047

Email:

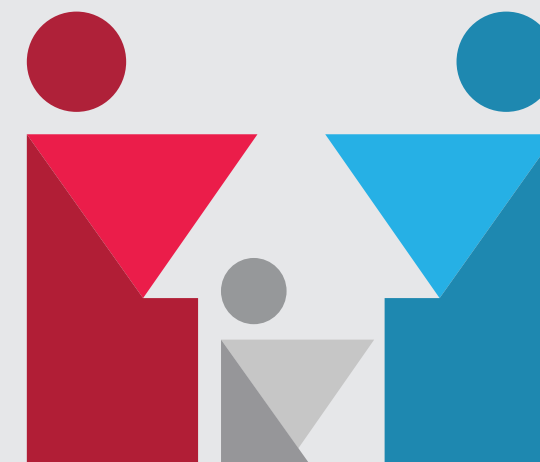
kentrokoinotitas@hersonisos.gr

Website:

**[www.hersonisos.gr/municipal/
kentrokoinotitas](http://www.hersonisos.gr/municipal/kentrokoinotitas)**

Address

**Eleftherias 50, Port of
Hersonissos, postcode: 70014
(Former Town Hall
of Hersonissos)**



Community Center

Municipality of Hersonissos



Ευρωπαϊκή Ένωση
Ευρωπαϊκό Κοινωνικό Ταμείο

With the co-financing of Greece and the European Union



ανάπτυξη - εργασία - αλληλεγγύη

What is the Community Center?

The Community Center is a new social structure of the Municipality of Hersonissos. It is staffed by a Social Worker and a Psychologist and offers interface and psychosocial support services to citizens.

Who does the Community Center concern?

It concerns all citizens of Hersonissos regardless of gender, age and nationality.

Community Center attaches importance to our fellow citizens and their family members who face social problems such as unemployment, economic weakness, homelessness, disability-related issues, social exclusion etc.

The services of the Community Center are provided free of charge.

At which point does the Community Center help the citizens?

It Informs and Facilitates

The citizen is informed and facilitated with regard to:

- His/her integration into social care programs (e.g. Social Solidarity Income)
- The reception of welfare benefits to which he/she is entitled
- His/her interconnection with psychosocial care services that deal with him/her

It Supports

Counseling/Psychological support for children, adolescents, adults

Support actions for:

- Unemployed, in order to join the labor market
- Young People, in order to prevent and address issues that concern them
- Citizens belonging to vulnerable social groups, in order to meet food and other needs

It collaborates

With services and citizens' organizations in order to respond as best as possible to the needs of the local community while promoting the cultivation of solidarity and volunteerism among citizens.

What can I ask for when I come to the Community Center?

You can mention the problem for which you need help and the staff, by writing down your personal details, will inform you about the assistance you will receive from the Community Center or from another organization.

Do I need to have a document in order for me to be served by the Community Center?

It would be helpful to have your AMKA (Social Security Number) with you. However, in any case, the Community Center's staff will inform you, based exclusively on your personal needs.

If you wish, you can also call the Community Center before you visit it.



Ευρωπαϊκή Ένωση
Ευρωπαϊκό Κοινωνικό Ταμείο

With the co-financing of Greece and the European Union

